

Let **UK** Home

1 Bedrooms

Flat

Located
in Manchester

£189,000



pmadmin@letukhome.co.uk

<https://www.letukhome.co.uk/>

01615219812



Great Ducie Street Manchester

M3 1PJ



Let UK Home are excited to offer this spectacular one-bedroom apartment in the heart of One Victoria in Manchester.

This property comprises a large bright open plan kitchen and living room, one double bedroom, a large spacious bathroom and ample storage.

One Victoria is situated in the heart of Manchester, adjacent to the vibrant Central Business District (CBD). It is conveniently located near Victoria Station and just a short walk away from the trendy Selfridges & Co. and Manchester Arndale shopping centres. The area also offers easy access to the library, art galleries, restaurants, bars, Chinatown, and other nearby attractions, meeting all residents' needs for shopping, dining, entertainment, culture, and art.

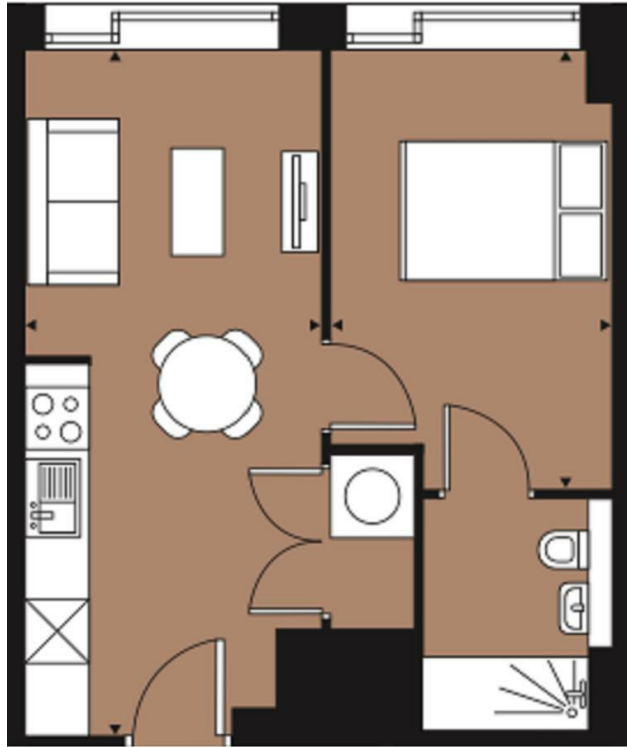
The apartment includes a rooftop garden that overlooks Manchester's skyline, providing a perfect space for entertainment and relaxation. Additionally, the surrounding area is well-equipped with commercial amenities. Within walking distance, residents can enjoy access to Manchester Arena, Selfridges & Co, Manchester Arndale Shopping Centre and National Football Museum.

Great Ducie Street Manchester

£189,000 Leasehold

- 2nd Floor
- Walking Distance to Local Shops
- In the heart of Manchester
- 24h Security
- Close to Transport Links
- Rooftop Garden





Kitchen/Living/Dining	2.9 x 6.6m	9' 5" x 21' 10"
Bedroom 1	2.8 x 4.2m	9' 2" x 13' 11"
NIA	37.4sqm	402.6sqft



Let **UK** Home

1/F, St James Tower 7 Charlotte
Street
Manchester
M1 4DZ

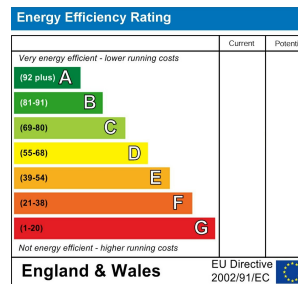
01615219812

padmin@letukhome.co.uk

Council Tax Band:

Local Authority:

Agents Note: Whilst every care has been taken to prepare these particulars, they are for guidance purposes only. All measurements are approximate and are for general guidance purposes only and whilst every care has been taken to ensure their accuracy, they should not be relied upon and potential buyers/tenants are advised to recheck the measurements.



<https://www.letukhome.co.uk/>